

CONSTRUCTION IMPACTS TO TRAFFIC

Arrivals Level - Terminal 1.5 Continuous Inner Lane Restrictions

Sunday, March 24 at 11PM continuous through Sunday, April 21 at 11:59PM



ACTIVITY

All Arrivals Level inner lanes at Terminal 1.5, between Columns 2A and 2D, will be closed continuously beginning Sunday, March 24 at 11PM through Sunday, April 21 at 11:59PM.

The continuous closure will facilitate the replacement of an underground domestic waterline by the LAWA Utilities and LAMP Enabling Project (LULEP).

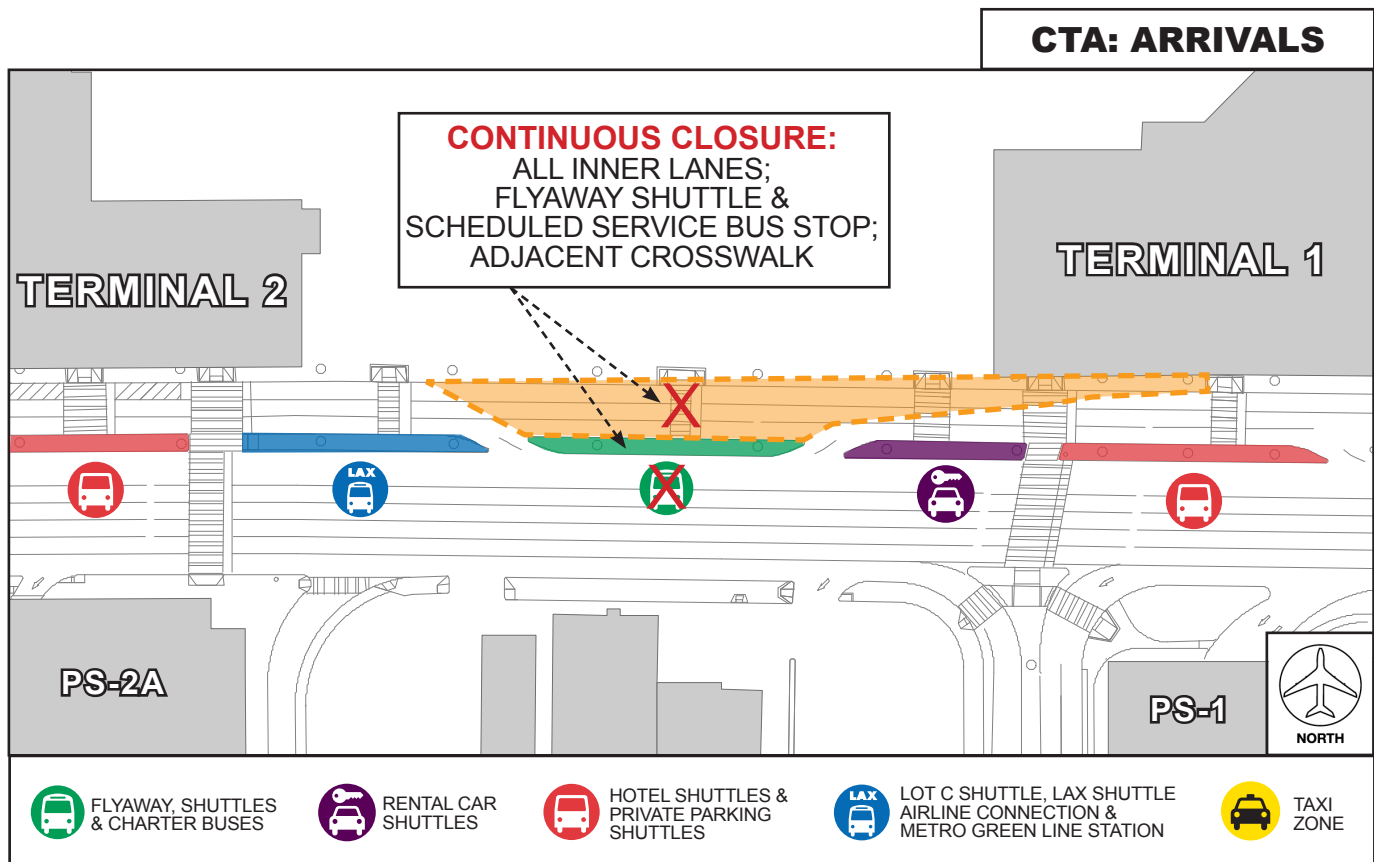
IMPACTS

CLOSED

- All Arrivals Level inner lanes at Terminal 1.5 (area between Terminal 1 and Terminal 2) between Columns 2A and 2D
- FlyAway Shuttle / Scheduled Service Bus Stop and adjacent crosswalk at Terminal 1.5
 - Signage will be posted to guide pedestrians to next available shuttle stop

OPEN

- Sidewalk will remain open at all times
- Access will be maintained at all times from the Terminals to the Parking Structures



LAX Construction Hotline: 310-649-5292 | [@FlyLAXAirport](#) | [LAIInternationalAirport](#)
LAXConstructionHotline@LAWA.org