

**\* EXTENDED THROUGH APRIL 30, 2019 \***  
**CONSTRUCTION IMPACTS TO TRAFFIC**  
**Arrivals Level - Terminal 1.5**  
**Continuous Inner Lane Restrictions**



**Sunday, March 24 at 11PM continuous through Tuesday, April 30 at 11:59PM**

**ACTIVITY**

All Arrivals Level inner lanes at Terminal 1.5, between Columns 2A and 2C, will be closed continuously beginning Sunday, March 24 at 11PM through Tuesday, April 30 at 11:59PM.

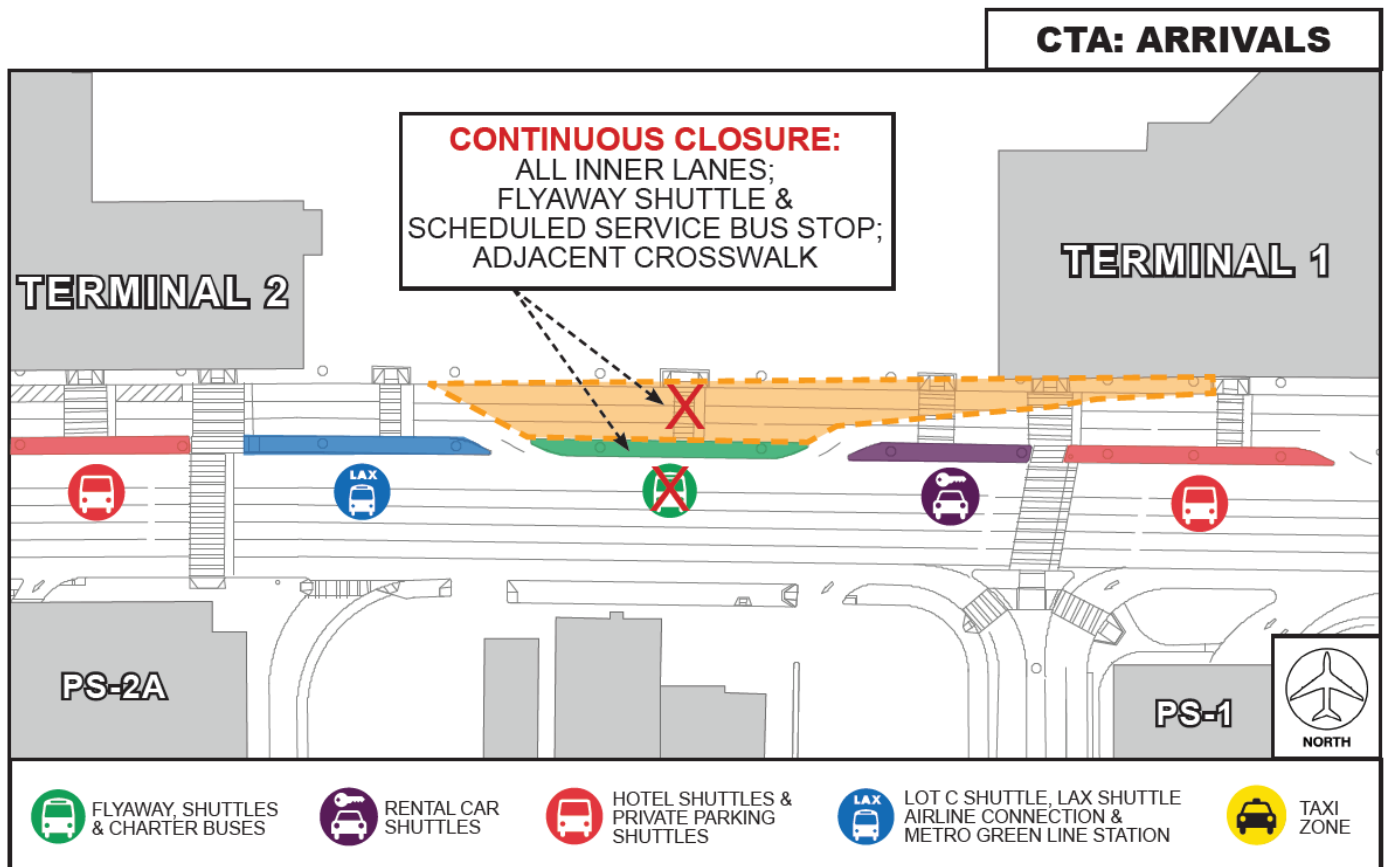
The continuous closure will facilitate the replacement of an underground domestic waterline by the LAWA Utilities and LAMP Enabling Project (LULEP).

**IMPACTS CLOSED**

- All Arrivals Level inner lanes at Terminal 1.5 (*area between Terminal 1 and Terminal 2*) between Columns 2A and 2C
- FlyAway Shuttle / Scheduled Service Bus Stop and adjacent crosswalk at Terminal 1.5
  - *Signage will be posted to guide pedestrians to next available shuttle stop*

**OPEN**

- Sidewalk will remain open at all times
- Access will be maintained at all times from the Terminals to the Parking Structures



LAX Construction Hotline: 310-649-5292 | @FlyLAXAirport | LAInternationalAirport  
 LAXConstructionHotline@LAWA.org